



---

**WRIGHT BROTHERS**  
THE BUILDING COMPANY

---

March 5, 2020

**INVITATION TO BID**

**Project: Western Elmore County Indoor Pool – Phase II Site Improvements**  
**480 South 18<sup>th</sup> East Street**  
**Mountain Home, Idaho 83647**

Wright Brothers, The Building Company is pleased to solicit bids for Phase II of the Western Elmore County Indoor Pool project. Phase II scope of work includes:

**General**

- Filing the EPA NOI
- Surveying
- Public Works License required
- Pricing for bonding

**Civil:**

- Earthwork
  - o Clear and Grub Site per C4.00
  - o Grade per C4.00 and C4.10
    - Including cut to western limits of Rattlesnake Creek
  - o SWPPP
    - Include tackifier for all pervious areas
    - Install and Maintain BMP's
  - o Concrete prep (See exterior improvements below for install)
  - o Asphalt prep (See exterior improvements below for install)
- Utilities
  - o Electrical Conduit for Site Lighting
    - Include concrete light pole bases and pull strings throughout
  - o Storm Drainage including Swales
    - All storm drainage utilities inside the scope of work limits
  - o Water demolition and installation to points of connection with future building and irrigation

**Exterior Improvements:**

- Concrete (Excluding Phase I) Refer to page C2.00
  - o Include sidewalk on the north side of the building
  - o Include ONE panel of sidewalk on the east side of the building
- Asphalt – Refer to page C2.00
- Gravel Parking Lot – Refer to page C2.00
- Irrigation (Sleeves Only) Refer to page L2.00

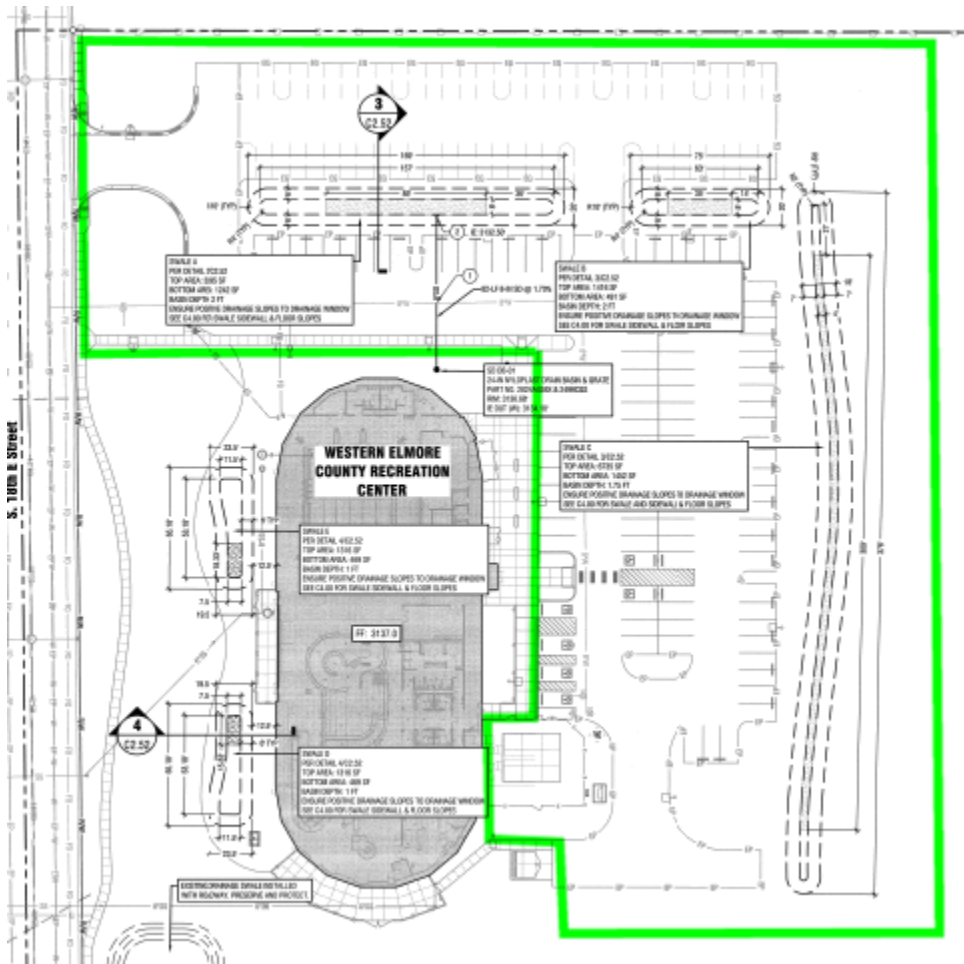
779 E State Street | PO Box 877 | Eagle, ID 83616  
Tel: (208) 938-6000 | Fax: (208) 938-6069 | [www.wbtbc.com](http://www.wbtbc.com)

---



**WRIGHT BROTHERS**  
THE BUILDING COMPANY

\*Please verify *work limits* set forth in the plan pages and base bids accordingly.



The drawings and specifications are available via the below link.

[https://wbtbccom-my.sharepoint.com/:f/g/person/cpk\\_wbtbc\\_com/EsFk5Ejs4lxHp929\\_8\\_-euEBZcJsU6vFt03VL2DF\\_HizLA?e=6XikY2](https://wbtbccom-my.sharepoint.com/:f/g/person/cpk_wbtbc_com/EsFk5Ejs4lxHp929_8_-euEBZcJsU6vFt03VL2DF_HizLA?e=6XikY2)

## BIDDER INFORMATION

All questions related to this project can be answered by Jeremy Schalk at [JSchalk@wbtbc.com](mailto:JSchalk@wbtbc.com) or 208-938-6000.

779 E State Street | PO Box 877 | Eagle, ID 83616  
Tel: (208) 938-6000 | Fax: (208) 938-6069 | [www.wbtbc.com](http://www.wbtbc.com)